

TWO-STOREY TOWN END



Riverside Village

IN THE TOWN OF THAMESFORD



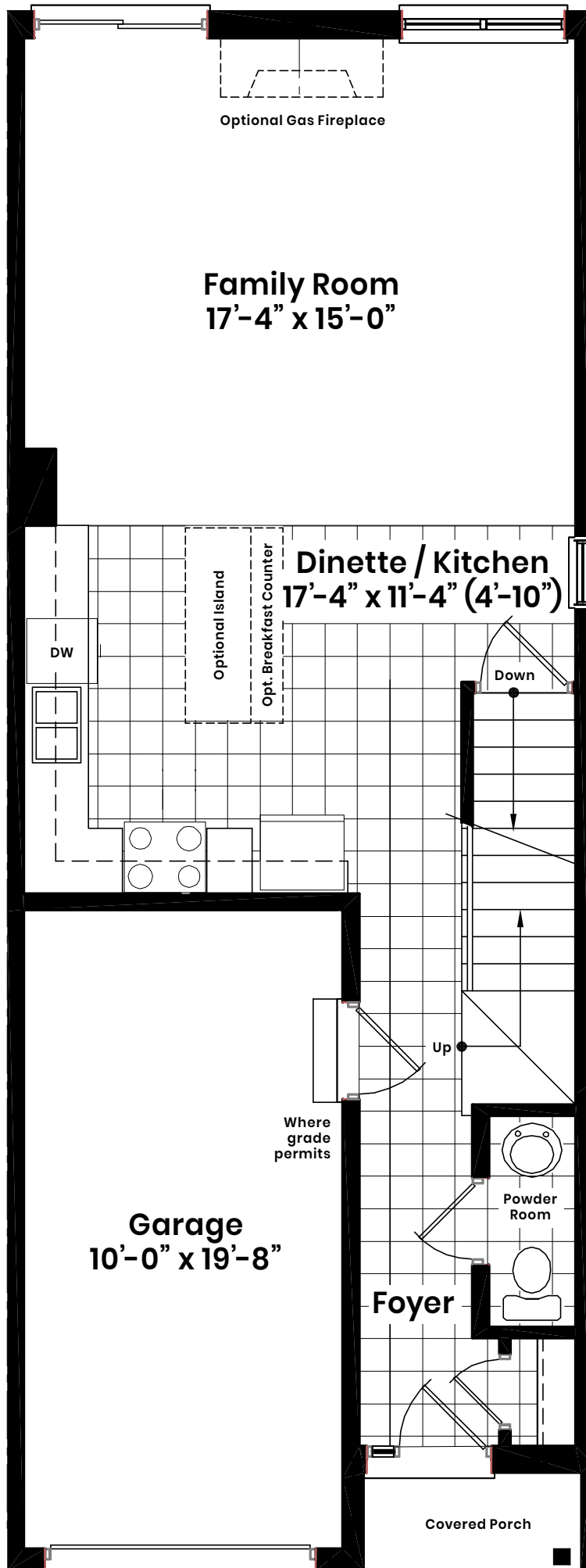
End unit
1,470
Square Foot

End unit
1,470
Square Foot

DISCLAIMER: January 1st, 2022. Illustrations are artist's concepts. Dimensions, specifications, layouts window sizes and materials are approximate only and are subject to change as provided in the Agreement of Purchase & Sale. Square footage varies according to architectural elevation. Plans may be reversed. Interior and/or exterior steps may vary due to grading. E. & O.E.

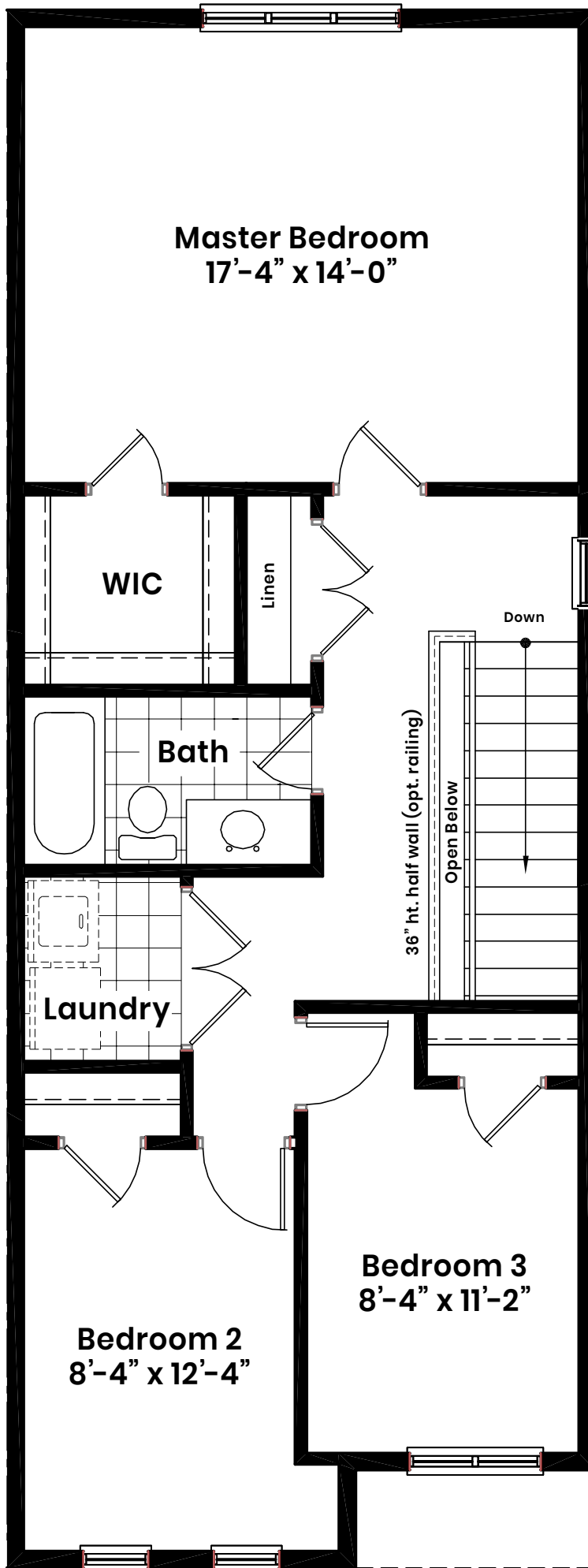
kingwoodhomes.ca





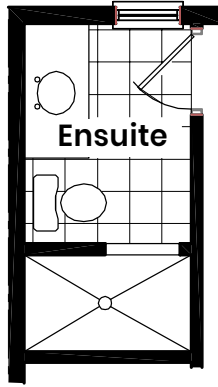
DISCLAIMER: January 1st, 2022. Illustrations are artist's concepts. Dimensions, specifications, layouts window sizes and materials are approximate only and are subject to change as provided in the Agreement of Purchase & Sale. Square footage varies according to architectural elevation. Plans may be reversed. Interior and/or exterior steps may vary due to grading. E. & O.E.

**Standard
Option A**
3 bed w/ 1 bath



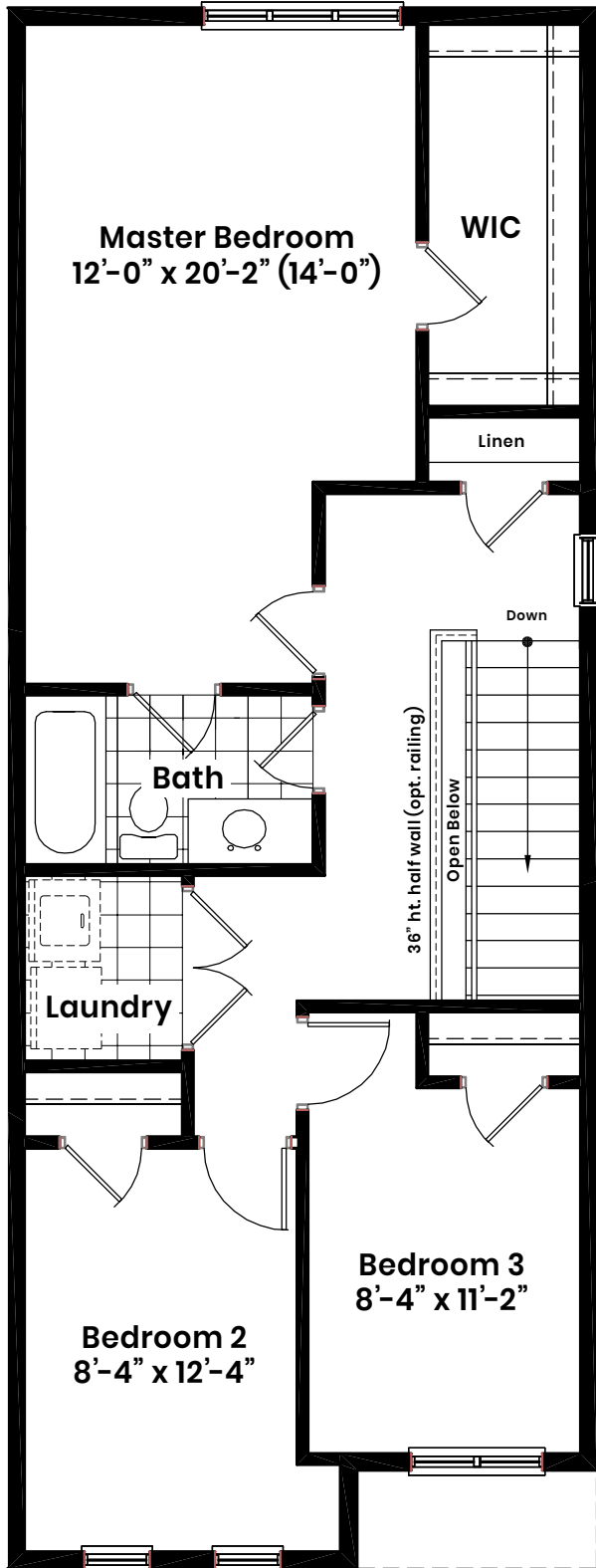
(Windows layout to reflect selected unit)

Optional 3 piece with shower

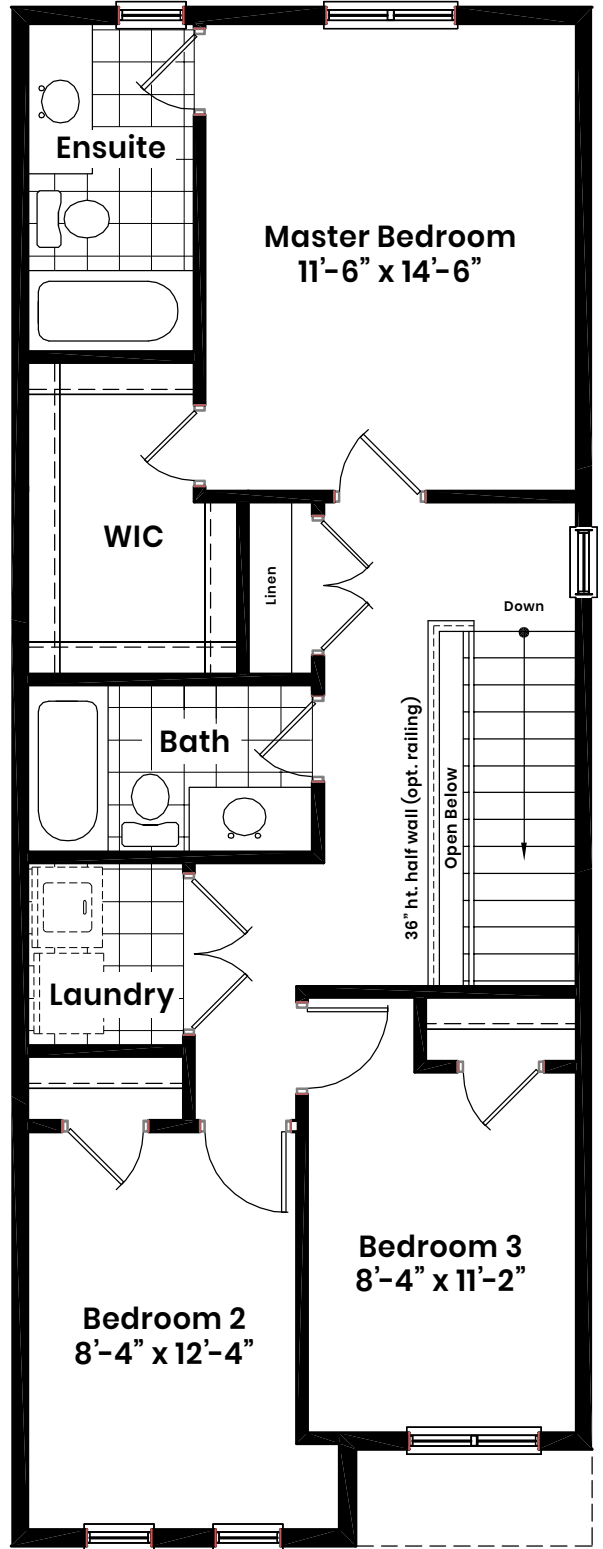


Upgrade option B

3 bed w/ 1 bath (ensuite privilege)



(Windows layout to reflect selected unit)



Upgrade option C

3 bed w/ 2 bath

